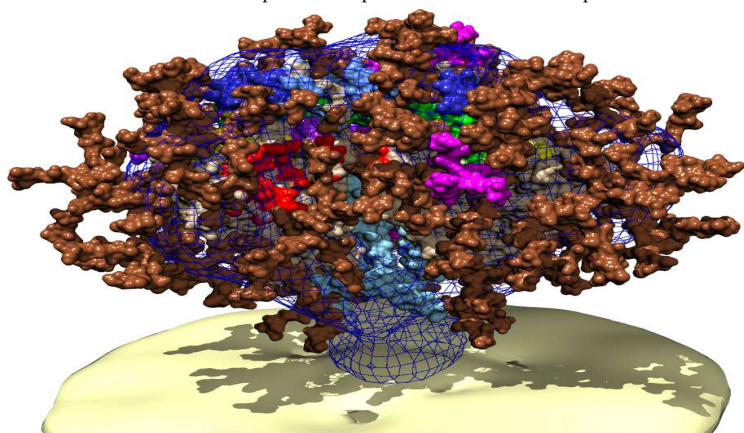


<https://www.path.ox.ac.uk/content/quentin-sattentau>



HIV-1 Env is the target of antiviral antibody responses.

POST-TRANSLATIONAL **MODIFICATION FOR HIV-1 VACCINE** **DESIGN**

Quentin
Sattentau

Professor

**Sir William Dunn School of
Pathology, University of
Oxford, UK**



DATE

**Wednesday,
February 05, 2020**

TIME

14:00-15:00

VENUE

**1st Central Building
2F, 2-1 Seminar
Room**

Host

**Prof. Ken Ishii
Division of
Vaccine Science**

Contact

Ext. 75219

DON'T MISS OUT!!

IMSUT International Joint Research Seminar



東京大学医科学研究所
The Institute of Medical Science, The University of Tokyo